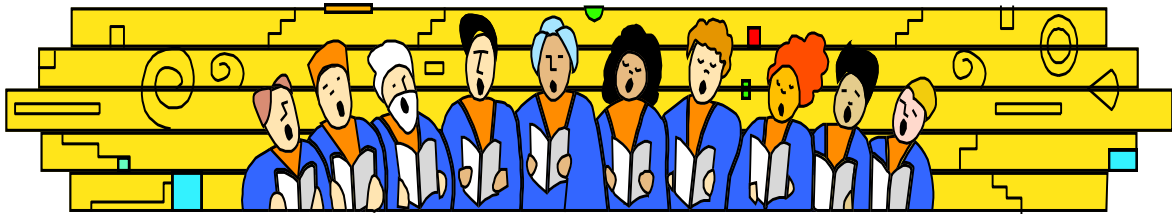


WILLIAMSBURG HIGH SCHOOL CHORAL HANDBOOK 2011 - 2012



**CHOIR 9
CONCERT CHOIR
MEN'S ENSEMBLE
TREBLE CHOIR
SOUND ATTRACTION**

THE HUMAN VOICE IS THE ORGAN OF THE SOUL
LONGFELLOW

From the Director...

We have an incredible year planned out for you. We have many talented singers which will provide excellent performances. Sound Attraction will have an more enhanced show and we have challenging and rewarding music planned for all.

Being a member of the choir requires dedication and commitment. Each of you possesses special talents that you bring to this group. You must use your talents wisely in order to create a successful choral experience for everyone. Only through cooperation, patience and personal responsibility will the choir experience be a success.

We need to continue to strive for rehearsals that are very exciting. Remember that every performance reflects what kind of rehearsal we have. We want strong performances.

A program the size of this one at Williamsburg cannot accomplish its goals without guidelines and regulations. It is imperative that each member knows what is expected of her/him. I look forward to working with you in a collective effort to produce outstanding musical performances and to experience the special joys that making music brings.

Expressivo,

Steven Manning

From the Associate Director...

Welcome back! This is my third year at WHS and I continue to feel connected with the students and staff in such a positive way. I always find the community and parents to be supportive and encouraging, and the

students to be driven, talented and passionate. Because of this we are able to have many exciting things planned this year in addition to our excellent concerts and performances.

I expect both students and myself to strive for a high standard of excellence, responsibility and continued progress. I know that through hard work and a little fun we will make this year the best one yet.

Thank you for the opportunity to continue my work with you; I cannot wait to get started!

“Music expresses that which cannot be said and on which it is impossible to be silent.” ~Victor Hugo

Sincerely,

Kathryn M. Ashelin

I. CHORAL ENSEMBLES

CHOIR IS A YEAR LONG COURSE.

- A. **Concert Choirs** - These ensembles will consist of students in grades 9 - 12. We will have a 9th Grade Choir and a 10-12 Choir. Performances include major school concerts, state contests and festivals. Additional sectionals or full choir rehearsals may be scheduled on designated dates. These ensembles meet on Mondays, Wednesdays and Fridays.
- B. **Men's Ensemble/Treble Choir** - These ensembles will consist of Concert Choir members. Performances will be the same as Concert Choir. Both ensembles will meet on Tuesdays and Thursdays.
- C. **Show Choir (SOUND ATTRACTION)** - This select ensemble will consist of members within the Concert Choir. Rehearsals will be scheduled before and after school. Performances will include school concerts, Spring Dinner Show, participation in State Show Choir Contest, Benton Invitational, Fort Madison Show Choir Invitational, Central Lee Invitational, C.R. Washington Contest and various community performances.
- D. **En Harmony & Sirens** - These select groups of men and women want more performance avenues. They are involved in all aspects of the music program. They perform the Banner at athletic events as well as sing at community events.

II. LESSONS

Lessons will be at least 15 minutes in length during school once weekly. Lesson attendance is mandatory. Missed lessons are to be made up within two weeks or a grade of zero will be assigned.

III. STATEMENT OF CHOIR POLICY

- A. In order to help choir members and parents understand their areas of responsibility, a choir policy statement is herein set forth. Becoming familiar with this policy will help each choir member make the most of this fine opportunity to become a better person through an association with music.
- B. A choir members responsibility to the Choral Music Program:
 - 1. Attend regularly and account for all absences.
 - 2. Make a real effort to learn and improve daily.
 - 3. Become responsible for and expect to assume the consequences of your actions.
 - 4. Be personally clean and neat and dress appropriately.
 - 5. Have the proper respect for those in authority.
 - 6. Follow all classroom school regulations and all travel instructions issued for trips.
 - 7. Be honest and fair with others concerning music and school life in general.
 - 8. Cooperate with fellow choir members and share with them the responsibilities and privileges that are a part of the choral program.
 - 9. Contribute positively to personal music education and that of others by complete utilization of talents.
 - 10. Read and sing music with insight and expression.

IV. REHEARSAL PROCEDURES

- A. Promptness - Be on time and be ready to sing.
- B. Self Discipline - No talking when your section is not singing.
- C. Respect and Courtesy - No talking when the director is talking.
- D. Rehearsal Schedule - Before the rehearsal begins, be in your proper place with your folder and music ready to start.
- E. Posture - When you sing use correct posture. Stand and sit tall.
- F. NO CHOIR IS BETTER THAN ITS REHEARSALS!!!!!! Rehearse as if it were a concert.
- G. Any discrepancies or discussions with the director concerning disciplinary action must take place after rehearsals.
- H. All rehearsals will be conducted in a professional work atmosphere with emphasis on improvement.
- I. Failure to follow rehearsal guidelines will result in:
 - 1. Director/Student conference
 - 2. Behavior Referral Form - Detention
 - 3. Parent Conference

V. EXTRA REHEARSALS AND SECTIONALS

It may become necessary to schedule additional choir rehearsals and sectionals. These will be posted well in advance to allow students adequate time to adjust their schedules. Extra rehearsals are required and may be held before or after school hours. If a student has a conflict and cannot attend an extra rehearsal or sectional, they must notify the director BEFORE THE REHEARSAL.

VI. PERFORMANCES

- A. **Attendance** – Public performances are school requirements just like tests, however they cannot be made up in the same manner. If an absence should occur, that student will have an opportunity to complete a make-up assignment. They will be expected to:
 - Perform their voice part for the music faculty to check for proficiency (**mandatory for any type of absence**).

That student will also be assigned **at least one** of the **following make-up assignments**:

- A five-page report on a subject of the director's choice pertaining to aspects of the missed performance.
- Attend a pre-approved concert and write a two-page reflection.
- Listen to two recorded performances (music provided by the director) and write a two-page compare/contrast report on what is heard.
- Complete a packet (created by the director) containing, but not limited to, vocabulary, music theory, short answer and essay questions.

These assignments will be assessed by the director and will be put in the "Performance" portion of the grade book. Grading guidelines/rubrics will be provided with each individual assignment. Students are expected to complete each make-up assignment **within one week** of receiving materials from the director. Failure to do so will result in no credit for that missed performance.

- B. **Absence Notification** – Choir members are expected to give the director advance notice of absences whenever possible. Students who give parental notification of a known absence **one week in advance**, or who have parental notification of a **sudden illness or death in the family** will be expected to complete **one** make-up assignment (as described above). Any student who gives **less than one week's notice** or **no notice** at all will be expected to complete **two** make-up assignments (as described above).
- C. **Christmas in Williamsburg/Large Group Contest** – Because of the amount of time required for the two Christmas in Williamsburg performances and the Large Group Contest performance, an absence from these will require a doubling of the make-up work assigned. For example: if a student misses Large Group Contest and has given 1 week's prior notice, they will be expected to complete two make-up assignments. The Christmas in Williamsburg rehearsal will also count as one performance.

Parental notification must be in the form of a written note. NO phone calls or emails.

- D. **Trips** – Students will be allowed to go home with their parents with a written note (given PRIOR to the performance) and acknowledgement from the parent.
- E. **Concert Dress** –
 Concert Choir – WHS Robes
- | | |
|-------|---|
| Men | - Black pants, dark tie, black dress shoes and black socks
- White dress shirt |
| Women | - Black/dark dress or skirt, knee-length (NO SHORTS/PANTS!!!)
- Black full dress shoes – No flip flops
- White blouse (Christmas in Williamsburg Concert)
- Nude hose
- No earrings, jewelry or hair pins |

You will not be allowed to perform without correct concert apparel. It will be considered a missed performance without notification. You will have to sing your part for the music faculty and complete two make-up assignments (explained above).

II. GRADING GUIDELINES

A. **Weights:**

Rehearsals = 50%; Weekly Lesson = 20%; Performances = 30%

B. **Rehearsals** – 5 points / week; assessed with the following guidelines:

- | | | |
|---|---|---|
| 5 | – | Is alert and actively contributes at all times
No talking
Always has excellent posture when singing |
|---|---|---|

- 4 - Is alert and contributes at all times
No talking
Always has excellent posture when singing
- 3 - Contributes willingly
Minor or no talking
Most of the time has good posture
- 2 - Low level of concentration
Occasional talking
Fifty percent or less of the time has good posture
- 1 - Lack of contribution
Constant talking
Rarely has good posture

C. **Lessons** – 5 points / lesson; assessed with the following guidelines:

- 5 - Shows marked improvement in part proficiency and vocal technique; demonstrates an active effort
- 3 - Shows some improvement in part proficiency and vocal technique; demonstrates some effort
- 1 - Shows little to no improvement in part proficiency and vocal technique; demonstrates little to no effort

Students will attend one lesson per week. Missed lessons must be made up within **two weeks or no credit** will be earned.

D. **Performances** – 50 points / performance; punctual attendance, proper dress and participation will earn full credit. Assessments of make-up assignments may change the amount of points earned by the student depending on part-proficiency and quality of work. Said assessments will be graded by the director.

Performance	Points Possible
Fall Concert	50
Christmas in Williamsburg Rehearsal	50
Christmas in Williamsburg Performances (2)	100
March Concert	50
Spring Concert	50
Large Group Contest	100
Senior Awards Night/Graduation	50

Concert Absence Form

Form must be filled-out and signed by director, student & parent/guardian.

Name of Student _____ **Grade** _____

Concert Missed _____ **Date** _____

Parental Notification of Absence (Within 1 Week or Sudden Emergency) **Yes** **No**

Attendance Policy Excerpt from Choral Handbook

Public performances are school requirements just like tests, however they cannot be made up in the same manner. If an absence should occur, that student will have an opportunity to complete a make-up assignment. They will be expected to:

- Perform their voice part for the music faculty to check for proficiency (**mandatory** for any type of absence)

That student will also be assigned **at least one** of the **following make-up assignments**:

- A five-page report on a subject of the director's choice pertaining to aspects of the missed performance.
- Attend a pre-approved concert and write a two-page reflection.
- Listen to two recorded performances (music provided by the director) and write a two-page compare/contrast report on what is heard.
- Complete a packet (created by the director) containing, but not limited to, vocabulary, music theory, short answer and essay questions.

These assignments will be assessed by the director and will be put in the "Performance" portion of the grade book. Grading guidelines/rubrics will be provided with each individual assignment. Assignments must be **completed within one week** of receiving materials from the director. Failure to do so will result in no credit for that missed performance.

Missing the Christmas in Williamsburg performances and/or Large Group Contest will result in a doubling of work required. Please see Choral Handbook for further clarification.

Performance	Points Possible
Fall Concert	50
Christmas in Williamsburg Rehearsal	50
Christmas in Williamsburg Performances (2)	100
March Concert	50
Spring Concert	50
Large Group Contest	100
Senior Awards Night/Graduation	50

Part-Proficiency Assessment: Date _____ **Time** _____ **Completed** **YES** **NO**

Make-Up Assignment(s) to be Completed _____

Due Date _____ **Points Earned** _____

Signatures

Director

Student

Parent/Guardian

IX. AWARDS

MYRTLE O'DONNELL MEMORIAL CHORAL EXCELLENCE AWARD

This award is presented to a qualified senior at Senior Awards Night. Applications can be picked up from the choir director. The award winner is judged from a selection committee based on their application and accomplishments in the choral department.

***OUTSTANDING CHORAL MUSICIAN AWARD**

Presented to the senior choir member who has demonstrated the most effective leadership and dedication to the Williamsburg High School Concert Choir throughout the year.

***NATHAN WIEBOLD OUTSTANDING SHOW CHOIR PERFORMER MEMORIAL AWARD**

Presented to the member who has shown the most leadership and dedication in Show Choir throughout the year.

***OUTSTANDING FRESHMAN**

Male/Female

***OUTSTANDING SOPHOMORE**

Male/Female

***OUTSTANDING JUNIOR**

Male/Female

*These awards will be determined by an objective vote of the students. The director has the option to accept or reject the decision.

**Quality is Never an Accident;
It is Always the Result of High Intention,
Sincere Effort, Intelligent Direction,
And Skillful Execution;
It Represents the Wise Choice of Many Alternatives**

Willa A. Foster

Williamsburg High School

CHORAL MUSIC SCHEDULE

2011-2012

2011

October 4	Simpson College Honor Choir
October 18	Fall Choral Concert (9-12) 7:30 p.m.-Messer
October 22	All-State Auditions
November 3, 4 & 5	Musical, 7:30 p.m. - Messer
November 8	WAMAC Choral Festival – Independence
November 17-19	All-State Festival - Ames
December 3	Christmas in Williamsburg Rehearsal 2:00 p.m.
December 4	Christmas in Williamsburg Grand Concert 3 & 5:30 p.m. High School Gymnasium
December 20	Junior High Music Concert 7:00p.m. - Messer

2012

January 8-9	Dorian Vocal Festival – Luther College
January 29	Show Choir Kick-Off, 2:00 p.m. - Messer
January 30	State Show Choir Festival
February 11	Benton Show Choir Invitational
February 25	Central Lee Show Choir Invitational
March 3	Ft. Madison Show Choir Competition
March 6	Jr. High Music Concert 7:00 p.m. - Messer
March 8	“Choirs In Concert” (9-12) 7:30 p.m. - Messer
March 10	C. R. Washington “ Mo Show”
March 24	State Music Festival, Solos and Ensembles
April 21	Dinner Show - H. S. Gym 2 & 6:30 p.m.
May 1	Spring Concert (9–12 Band/Choral) 7:30p.m. - Messer
May 4	State Music Large Group Contest
May 16	Senior Awards Night 7:00p.m.
May 20	Graduation

MUSIC ASSOCIATION - 7:00 p.m.

High School Music Room
First Thursday of Each Month

September 1

October 4 (Tues.)

November 3

December 1

January 5

February 2

March 8 - 2nd

April 12 - 2nd

May 3

ACKNOWLEDGEMENT FORM

I HAVE READ THE CONCERT CHOIR HANDBOOK AND UNDERSTAND THE RULES AND REHEARSAL PROCEDURES FOR PARTICIPATING IN CHOIR

STUDENTS SIGNATURE

I HAVE ALSO READ THE HANDBOOK AND WILL HELP MY SON/DAUGHTER TO ABIDE BY THESE RULES AND REQUIREMENTS SO THAT MY SON/DAUGHTER CAN HAVE THE BEST LEARNING EXPERIENCE POSSIBLE.

PARENT/GUARDIAN

